

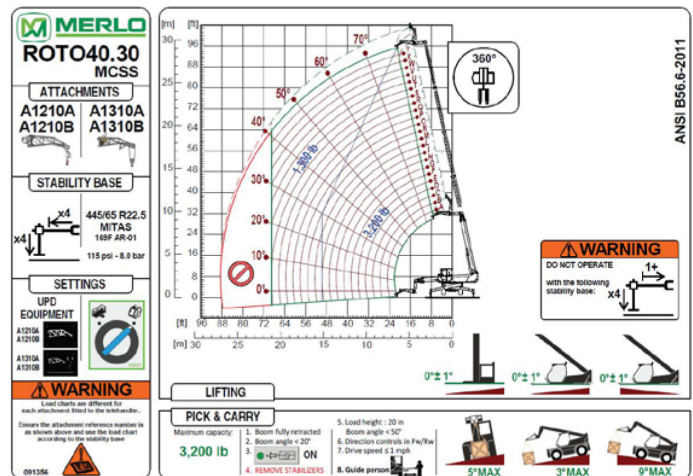
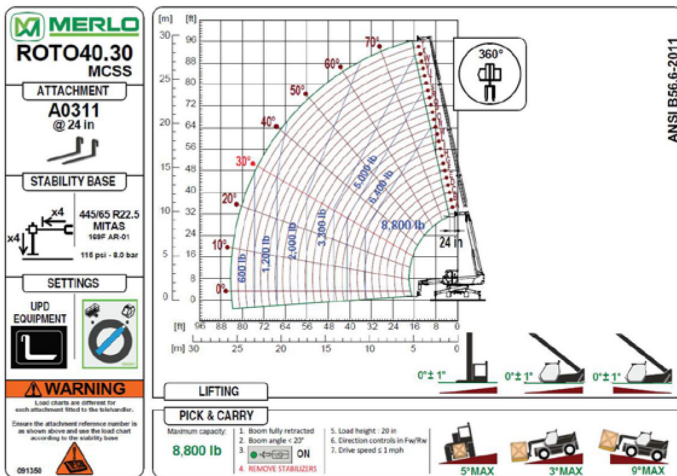
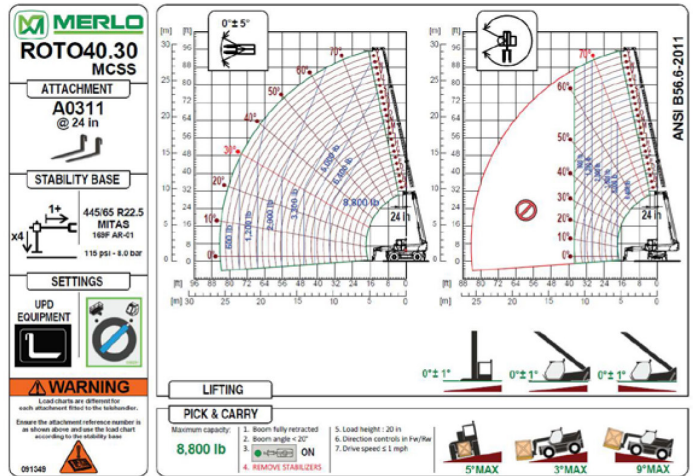
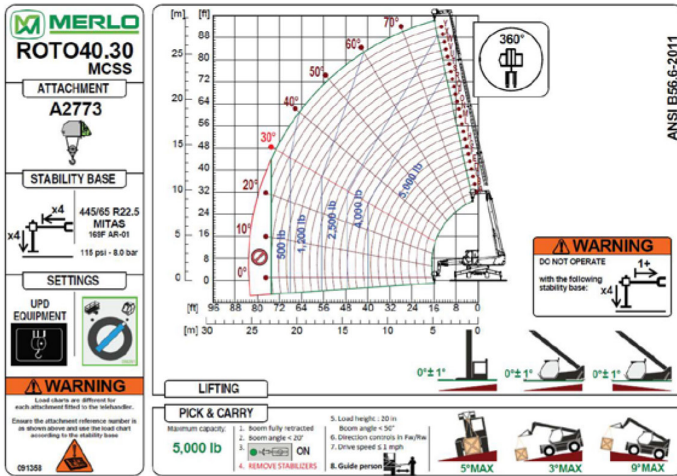


ROTO 40.30 MCSS



Maximum Load Capacity: 8,820 Lbs
Maximum Lift Height: 96' 8"
Maximum Reach: 83' 3"
Load Capacity at Max. Reach: 880 Lbs
Load Capacity at Max. Lift: 3,300 Lbs

ROTO 40.30 MCSS



The technical data and other information in this document are not binding. We reserve the right to modify our products without prior notice as part of our policy of continuous improvement

November 2019

IMPORTED & DISTRIBUTED BY



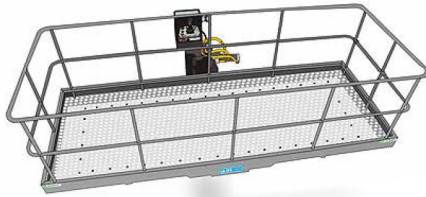
ams-merlo.com

803-327-4949

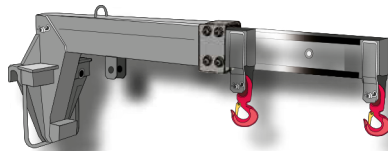
1205 Galleria Blvd., Rock Hill, SC 29730

ATTACHMENTS

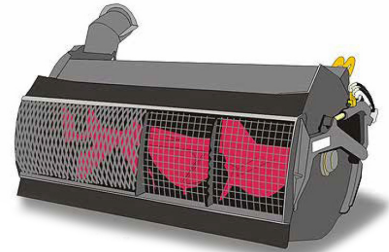
- Space System
- Tunnel Ring
- Variable Width Man Baskets
- Crane Booms
- Crane Hooks
- Fly Jibs
- Fly Jibs with Winches
- Mini Tower Jibs
- Hydraulic Winches
- Material Handling Buckets
- Digging Buckets
- Fixed Platforms
- Concrete Mixer
- Pipe Handlers



Variable Width Man Basket



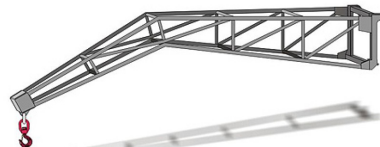
Telescopic Crane Jib



Concrete Mixer



Floating Forks Carriage



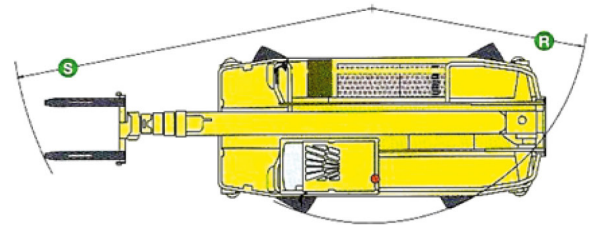
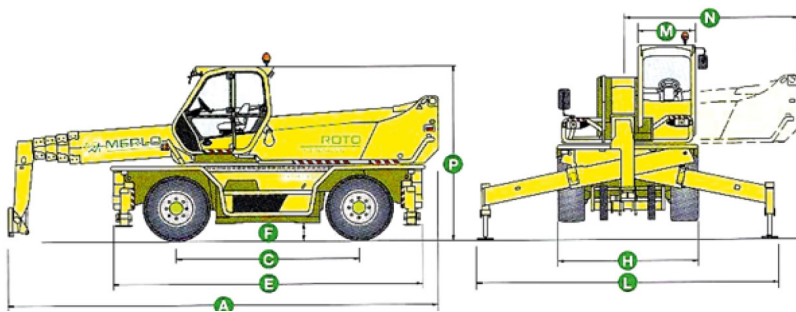
Fly Jib Lift



Space System



Hydraulic Winch



DIMENSIONS

A	24' 8"	F	1' 2"	M	3' 3"	R	14' 8"
C	10' 5"	H	8' 2"	N	9' 8"	S	22' 2"
E	18' 2"	L	17' 3"	P	10' 2"		

November 2019

IMPORTED & DISTRIBUTED BY



ams-merlo.com

803-327-4949
1205 Galleria Blvd., Rock Hill, SC 29730

CHARACTERISTICS

- **Continuous turret rotation** is achieved through a Merlo electro- hydraulic central rotary coupling
- Cab steel frame that complies with the international **ISO 3449 Level II FOPS** (Falling Object Protective Structure) standard
- **Pneumatic suspension** seat
- **Electronic joystick** controls
- **Steering wheel tilt** is adjustable by up to 16 degrees
- **Merlin system** (Merlo Local Interactive Network) provides a completely new way to automatically manage all the operating parameters and safety functions
- **MCSS system** (Merlin Continuous Slew Safety) adjusts automatically to the load diagram to suit the stabilizer position chosen by the operator
- **Stabilizers** with independent extension and jacking
- **Hydropneumatic suspension** ensures maximum driving comfort and stability by leveling the machine
- **Iveco** turbo intercooler **4 cylinder** engine, delivering **170HP**
- **Hydrostatic** transmission utilizing variable displacement motor and pump
- **Load-sensing** hydraulic pump
- Maximum speed: **25mph**

- Standard
- Optional

Performance figures refer to the machine equipped with forks, operating on stabilizers. (1) Measured at suspension mid-point. (2) Stabilizing and leveling can be performed automatically (3) ZM2 version front tool holder

PERFORMANCE

Total weight unladen, with forks	42,320 Lbs
Maximum load capacity	8,800 Lbs
Maximum lift height	96' 8" Ft
Maximum forward reach	83' 6" Ft
Lift height at maximum load capacity	64' 0" Ft
Forward reach at maximum load capacity	34' 4" Ft
Loac capacity at maximum height	3,300 Lbs
Load capacity at maximum forward reach	880 Lbs
Turret rotation (degrees)	Continuous
Power / 4 Cylinder Turbo Diesel	Iveco / 170 HP
Transmission	2 Speed / Hydrostatic
Fuel capacity	40 Gallons
Maximum Speed	25mph
Load sensing hydraulic system (PSI)	3,045-38
Hydraulic oil capacity	42 Gallons
Electrical circuit	12
Battery	160
Hydraulically controlled stabilizers	● (2)
Hydropneumatic suspension	●
Cab compliant with FOPS standards	●
Merlin electronic control system	●
Electro-mechanical joystick controls	-
Electronic joystick controls	●
Tac-Lock attachment coupling	● (3)
Auxiliary boom hydraulic service	●
Two floating forks (48 inches long)	●
Hydrostatic transmission	●
Hydrostatic oil capacity	3.1
Finger-Touch direction reversing control	●
Permanent four-wheel drive	●
4 Wheel Drive / 3 Steering Modes	●
Service disk brakes on all wheels	●
Automatically locking parking brake	●
Tires	445/65-22.5
Radio remote control	○
Pneumatic seat	●
Rear differential lock	○
Four cab working lights (2 front & 2 back)	○
Manual air conditioning system	○
Roof window wiper	○
Manual battery isolator	○
Front and roof sun shade	○

IMPORTED & DISTRIBUTED BY



ams-merlo.com

803-327-4949

1205 Galleria Blvd., Rock Hill, SC 29730